

SEE ■ ■ ■
THINGS ■
■ DIFFERENTLY



WAKE COUNTY
PUBLIC SCHOOL SYSTEM

Office of Magnet & Curriculum
Enhancement Programs

Magnet / Early College Video

Magnet Objectives

- Reduce high concentrations of poverty
- Promote school integration
- Maximize use of school facilities, and
- Provide innovative and/or expanded educational opportunities

Magnet Fun Fact

Magnet Schools started in 1982 in Wake County. The first magnet school was Hunter Gifted & Talented / AIG Basics Magnet Elementary.

Magnet Schools of America Merit Award Winners for 2020-DISTINCTION



Athens Drive

Brentwood

Brooks

Broughton

Conn

East Garner

East Millbrook

Enloe

**Farmington
Woods**

Fuller

Garner

Green

Jeffreys Grove

Kingswood

Millbrook ES

Moore Square

Oberlin

Partnership

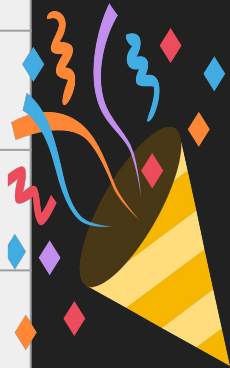
Poe

Powell

Smith

**Vernon
Malone**

Wake STEM



Magnet Schools of America Merit Award Winners for 2020-EXCELLENCE



A.B. Combs

Carnage

Carroll

Fox Road

Hunter

Joyner

Ligon

Millbrook HS

Reedy Creek MS

Stough

**Wake EC of Health and
Sciences**

Washington

Wendell

Wiley

Zebulon ES

Zebulon MS



Magnet Schools of America Merit Award Top 20 Winner Recognitions

Hunter GT/AIG Basics

**Reedy Creek Center for the
Digital Sciences**

**Wake Early College of Health
and Sciences**



**Wendell Creative Arts and
Science**

Wiley International Studies

Magnet Schools of America Newly CERTIFIED Schools for 2020

Fuller GT/AIG Basics

Zebulon GT MS

Magnet Schools of America Certified DEMONSTRATION Schools for 2020

**Reedy Creek Center for the
Digital Sciences**

**Vernon Malone College and
Career Academy**

Our MSA Principal and Teacher of the Year!



**Bob Grant, Principal,
Washington GT ES
Wake County MSA PoY
Nominee**



**Josh Hunter, Teacher,
Moore Square GT/AIG Basics MS
MSA Regional Winner**

Wake County Principals and Assistant Principals of the Year!



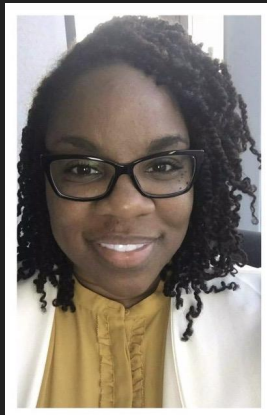
Congratulations **NICE GOING!**
GREAT! Way to Go!
Yea! **FELICITATIONS**
CHEERS Take A **BEST**
BOW! **WISHES!**



Congratulations **NICE GOING!**
GREAT! Way to Go!
Yea! **FELICITATIONS**
CHEERS Take A **BEST**
BOW! **WISHES!**



Bob Grant,
Principal,
Washington ES



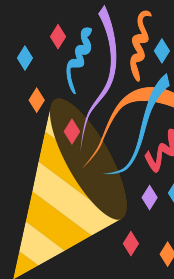
Leslie Blake,
Assistant,
Principal,
Millbrook ES

Elena Ashburn
Principal,
Broughton HS



Monica Sawyer,
Assistant,
Principal,
Enloe HS

Winston Pierce
Principal,
Farmington
Woods ES



Why Magnets?



**Promote Innovative Curriculum
Support Personalized Learning
Encourage Creativity , Critical Thinking
Prepare for Culturally Diverse World
Offer K-12 Stability**



K-12+ Magnet Programs

**Leadership & Technology
Gifted & Talented
International Baccalaureate
Global Studies/Language Immersion
Early Colleges
Application Schools**

Application Schools



- Multi-track Year-Round (K-8)
 - Apply during magnet application period OCT 15- JAN 28
- Southeast Raleigh Elementary (K-5)
 - Apply during magnet application period OCT 15- JAN 28
- Crossroads FLEX High School (9-12)
 - Apply during early college application period in OCT 15- DEC 14

Awards

- 325 national merit awards since 1996
- 13 top national awards since 1999
- 17 nationally certified schools since 2017
- District award for Magnet Sustainability
- Recipient of the MSAP Grant Award



Steps to Exploring and Applying



1. Use the [magnet explorer tool](#)
2. Review level of priority
www.wcpss.net/priorities
3. Review magnet options:
www.wcpss.net/preview
4. Attend events:
 - a. wcpss.net/magnetevents
5. Schedule a tour
 - a. wcpss.net/magnettours
6. APPLY
 - a. Early College - Oct 15-Dec 14
 - i. earlycolleges.wcpss.net/apply
 - b. Magnet & YR - Oct 15- Jan 28
 - i. magnet.wcpss.net/apply
7. Notification February 23

Application Process

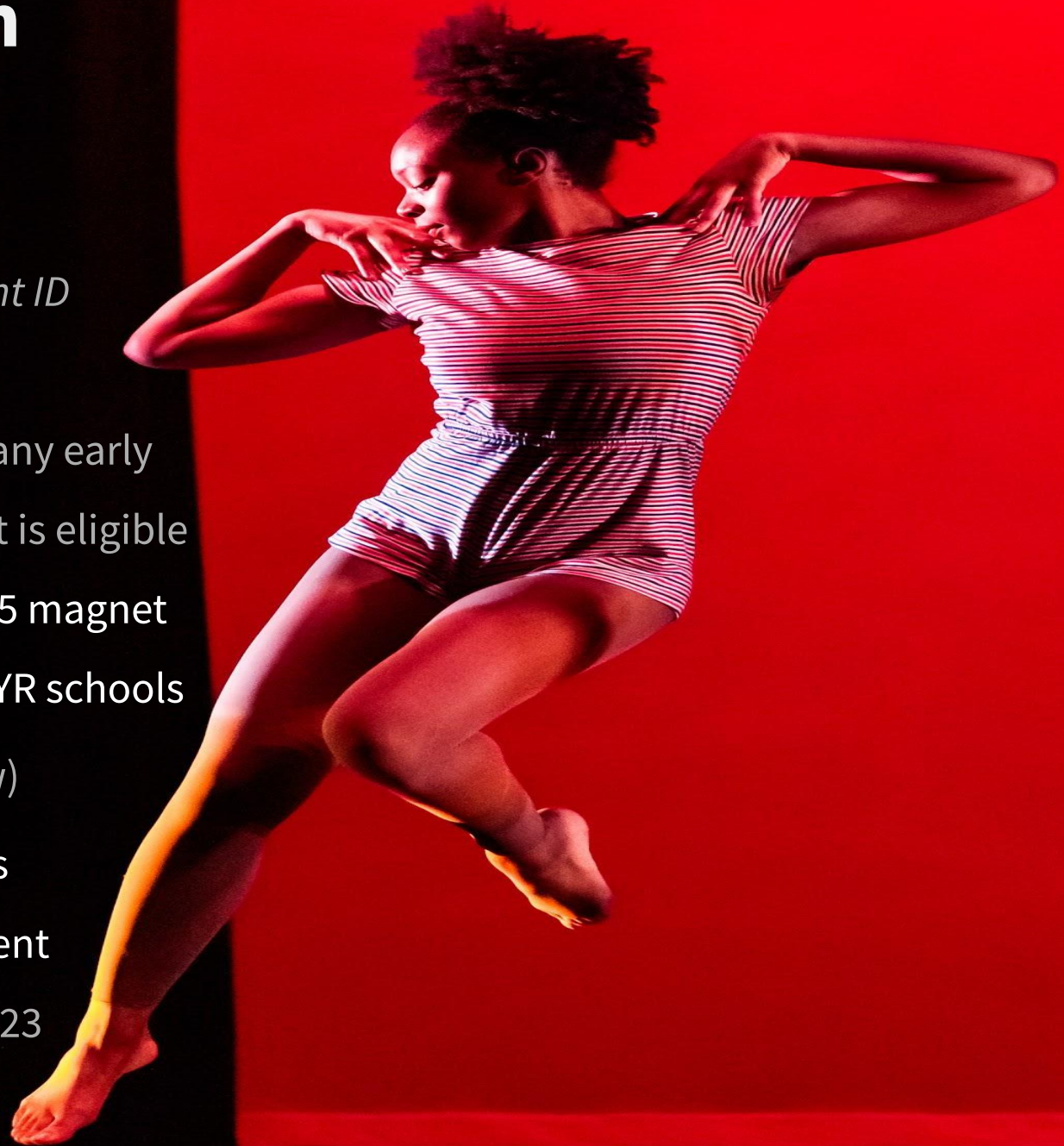
1. Create account

*must have active student ID
number*

- May apply to as many early colleges as student is eligible
- May identify up to 5 magnet programs and 1-2 YR schools
(wcpss.net/preview)

2. Rank order choices

3. Notification in parent account February 23



Magnet Selection



1. Selection priorities aligned with Magnet Objectives (wcpss.net/priorities)
2. Siblings of returning magnet students have highest priority
3. Priority for students with magnet status and base students following their program pathway
4. 10% of seats at each magnet school do not use priorities

Early College/Crossroads FLEX Selection

- Priority 1: Siblings of existing students, grades 6 and 9. Sibling must have an Early College application score of 70+ in order to receive this priority.
- Priority 2: Students whose Early College application score is 90-100, selection based on an applied random number
- Priority 3: Students whose Early College application score is 80-89, selection based on an applied random number
- Priority 4: Students whose Early College application score is 70-79, selection based on an applied random number

-Let's Review-

- Rising kindergartners or students new to Wake County register at base school – **October 15, 2020** wcpss.net/enroll
 - Students must have a student identification number to apply for a magnet, early college, or year-round
- You may apply to 1-5 magnet programs/schools and 1-2 year round schools ranking them first choice, second choice...
 - Use www.wcpss.net/eligible to identify eligible magnet schools based on your address
- Any student NOT selected for their first choice school is placed in an applicant pool
 - Even if you are selected for a second or third choice.
 - Could be in several applicant pools (early college, magnet/year-round)
 - Selection to another school does NOT impact place in applicant pool
- If all students in a residence (siblings) cannot be selected, then none are selected
- There is no decline option –
- To attend a different school or return to base, they must request it during the transfer period (Feb 24-Mar 9)
- There are no test or performance requirements to apply to a magnet program except for the AIG Basics program at the middle school level
- Guaranteed assignment until the terminal grade. High priority to the program pathway school
- MUST submit an application to continue in a magnet school at the next grade level.
 - Magnet students have priority in the selection process

Contact Us

WEB

www.wcpss.net/magnet

EMAIL

magnetcenter@wcpss.net

PHONE

919.533.7289



MONEY \$
FOREVER

